



# PLA-RP100BA3

Power Inverter Heat Pump

R410A High COP 4-Way Blow Ceiling Cassette System

Advanced inverter technology makes the Mr Slim Power Inverter the number one choice for improving comfort. They provide energy savings of up to 70% annually when compared to a previous non-inverter model. Operating noise has also been reduced thanks to improvements in fan design, while existing pipe work is reusable for easier maintenance and installation.

- **Optional 'I See Sensor' for energy saving and smooth temperature control throughout the room**
- **Airflow controllable for ceiling heights up to 4.2m, with automatic adjustment of fan speed**
- **Reduced draft air distribution, with independent vane control**
- **Filter lowering operation down to 4m (optional PLP-6BAJ grille required)**



Pictures not to scale

## Product Details

### PLA-RP100BA3 Indoor Unit

|                                               |                      |
|-----------------------------------------------|----------------------|
| Capacity (kW):                                |                      |
| Heating (Nominal) (Low - High)                | 11.20 (4.50 - 14.00) |
| Cooling (Nominal) (Low - High)                | 10.00 (4.90 - 11.40) |
| Heating (UK) (Low - High)                     | 9.50 (3.85 - 11.90)  |
| Cooling (UK) (Low - High)                     | 9.20 (4.50 - 10.50)  |
| SHF R410A (Nominal)                           | 0.74                 |
| COP / EER (Nominal)                           | 4.61 / 4.18          |
| Energy Label Heating / Cooling                | A / A                |
| Width (grille) - mm                           | 840 (950)            |
| Depth (grille) - mm                           | 840 (950)            |
| Height (grille) - mm                          | 298 (35)             |
| Weight (grille) - kg                          | 26 (6)               |
| Airflow (m <sup>3</sup> /min) - Lo-Mi1-Mi2-Hi | 20-23-26-30          |
| Noise (dBA) - Lo-Mi1-Mi2-Hi                   | 32-34-37-40          |
| Pipe Size Gas mm (in)                         | 15.88 (5/8)          |
| Pipe Size Liquid mm (in)                      | 9.52 (3/8)           |
| Electrical Supply                             | Fed by Outdoor Unit  |
| Phase                                         | Single               |
| Fuse Rating (BS88) - HRC (A)                  | 6                    |
| Interconnecting Cable No. Cores               | 4                    |
| Grille Ref                                    | PLP-6BA GRILLE       |

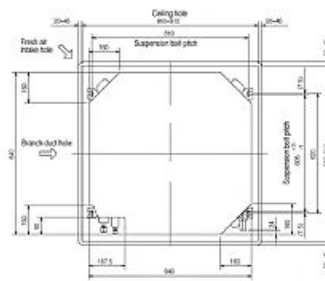
### PUHZ-RP100VKA Outdoor Unit

|                                               |                |
|-----------------------------------------------|----------------|
| Width - mm                                    | 1050           |
| Depth - mm                                    | 330+30         |
| Height - mm                                   | 1338           |
| Weight - kg                                   | 116            |
| Noise (dBA) (Heating /Cooling) - Lo-Hi        | 51 /46-49      |
| Electrical Supply                             | 220-240v, 50Hz |
| Phase                                         | Single         |
| Fuse Rating (BS88) - HRC (A)                  | 32             |
| SystemPower Input (kW) - Heating (Nominal)    | 2.43           |
| SystemPower Input (kW) - Cooling (Nominal)    | 2.39           |
| SystemPower Input (kW) - Heating (UK)         | 2.16           |
| SystemPower Input (kW) - Cooling (UK)         | 2.03           |
| Starting Current (A)                          | 5              |
| SystemRunning Current (A) - Heating / Cooling | 11.26 / 11.04  |
| Mains Cable No. Cores                         | 3              |
| Max Pipe Length (m)                           | 75             |
| Max Height Difference (m)                     | 30             |
| Charge (kg) - 30m                             | 5              |

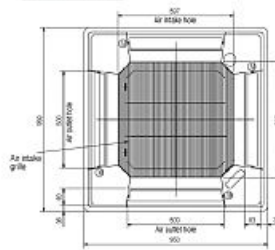
## Dimensions

### PLA-RP100BA3

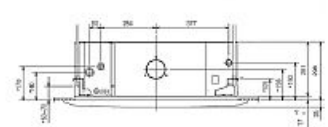
#### Upper View >



#### Front View >

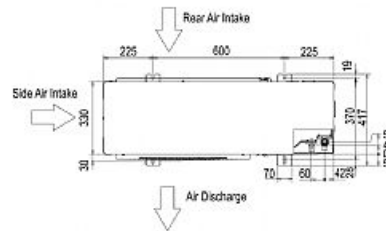


#### Side View >

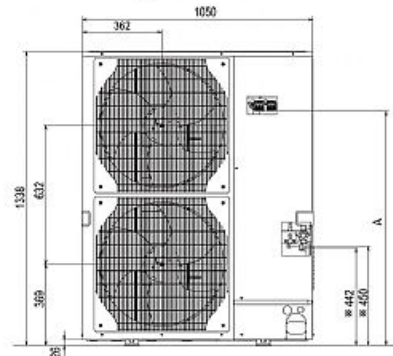


### PUHZ-RP100VKA

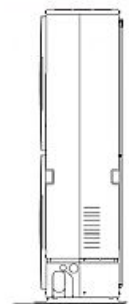
#### Upper View >



#### Front View >



#### Right Side View >



Telephone: 01707 282880

Email: [air.conditioning@meuk.mee.com](mailto:air.conditioning@meuk.mee.com) Website: <http://www.mitsubishielectric.co.uk/aircon>

Tel:  
Fax:



Mitsubishi Electric reserves the right to make any variation in technical specification to the equipment described, or to withdraw or replace products without prior notification or public announcement.